



**Kajaria**  
**ETERNITY**  
tiles forever

**The Ultima**



INDIA'S NO. **1** TILE COMPANY  
IS ALSO WORLD'S  
**8**<sup>TH</sup> LARGEST MANUFACTURER  
OF TILES



Kajaria Gailpur Plant, Rajasthan



# ***Kajaria***





Vastness has always fascinated humanity.  
A tree is beautiful, but a forest is sublime.  
Water is gorgeous, but the ocean captivates  
the mind. It is this sense of awe that the  
majesty and scale of nature has inculcated in  
us that inspired The Ultima. Not just beauty,  
but magnitude: because true beauty is never  
contained.

Because **BIG IS BEAUTIFUL**

## The Ultima

---



For wall  
application



For floor  
application



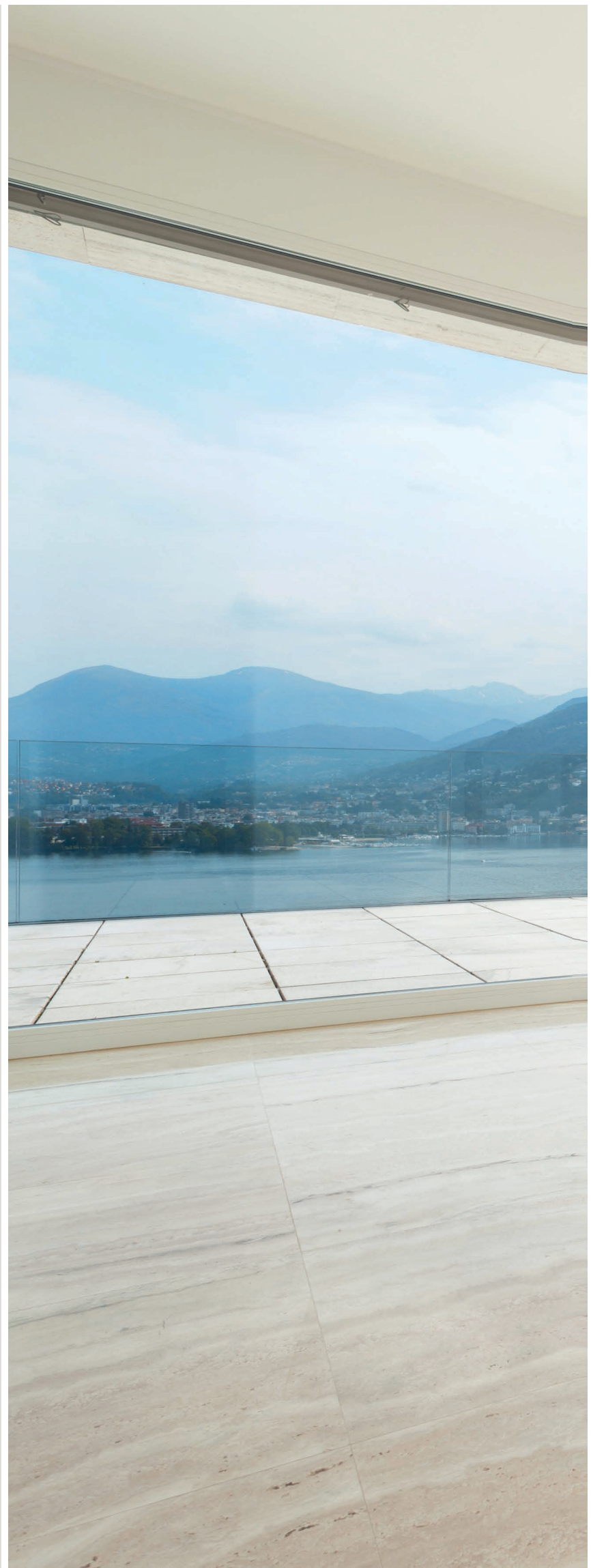
Fine  
detailing



Stain  
resistant



Water  
resistant





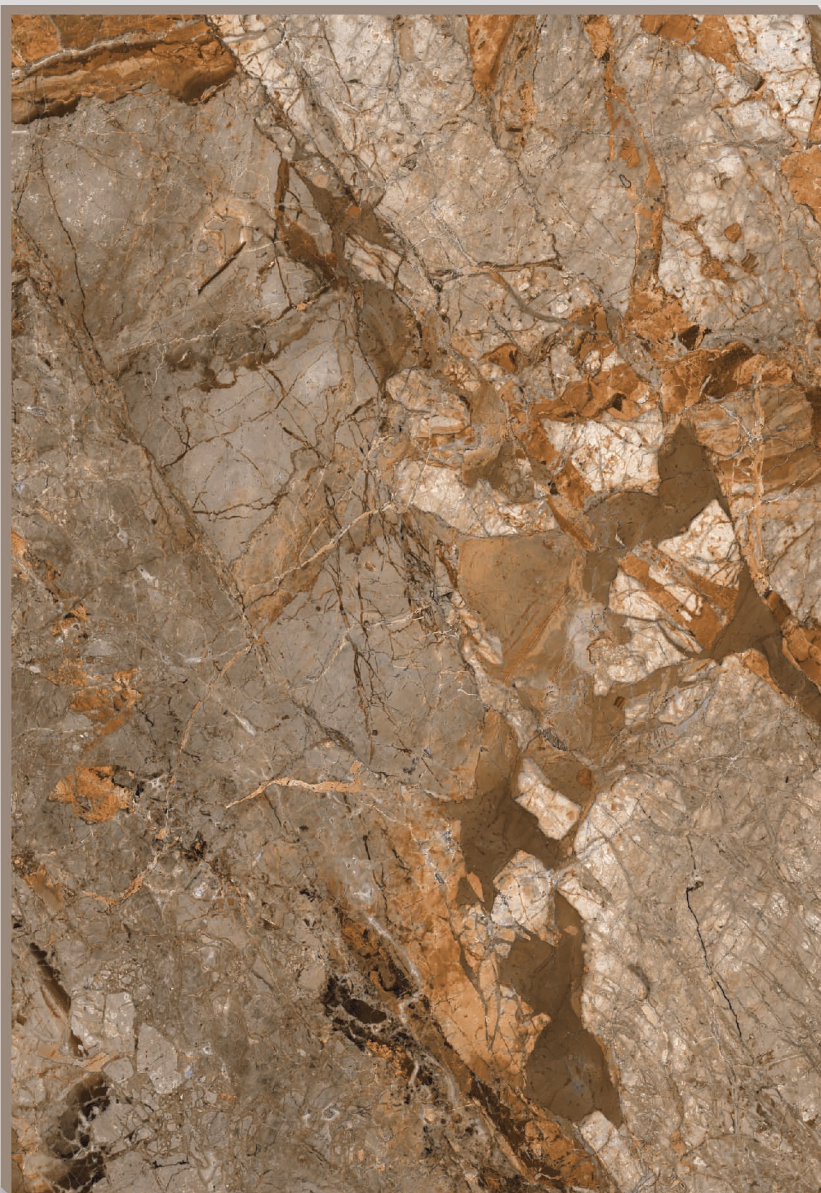




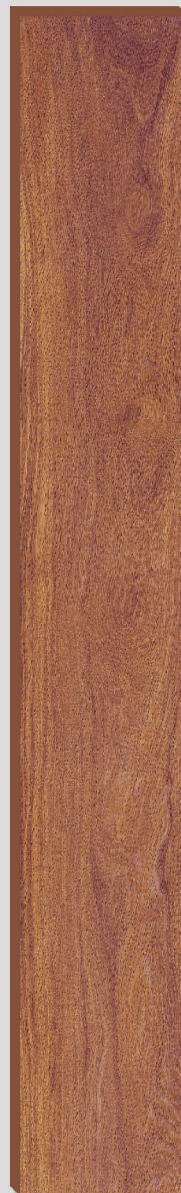


EXPAND YOUR PERSPECTIVE

AVAILABLE IN VARIOUS SIZES



1200x1800 mm



290x1800 mm



# The Ultima



The Ultima - a premium collection of extra-large vitrified slabs by Kajaria, is bigger than your dreams. While their large size exuberates the grandeur of real marble, their stunning looks charm connoisseurs across the globe.



**800x1600 mm**



**1200x1200 mm**



## STUNNING FINISHES BY ULTIMA



### POLISHED

---

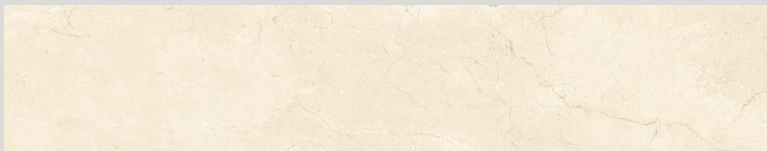
A spectacular mirror like effect is achieved with a thicker coat of glaze. Highly polished look with rich and true colour experience.



### SUPER WHITE

---

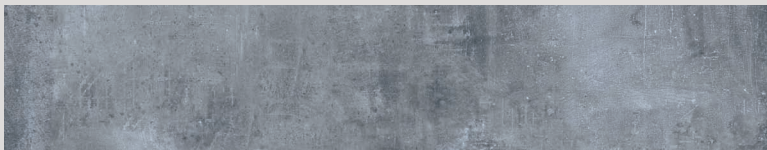
With an impressive 93% on the L-value scale, it lends the purest of white hues to any space.



### MARBLETECH

---

Our marbletech finish is the closest thing to natural marble. With a special glaze coated on top of the design, it's sure to grab everyone's attention.



### MATT

---

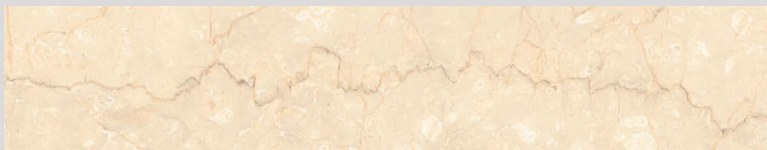
The durable and slip resistant slabs are a perfect fit for both indoor and outdoor spaces. The matt finish complements the functionality of these slabs.



### GLOSS MATT

---

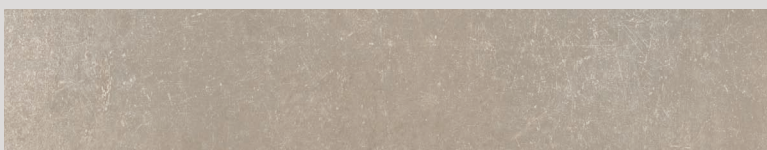
With a unique gloss and matt finish, gloss matt is amongst the first technical body slabs to carry a dual effect.



### CARVING

---

Carving finish creates crevices and grains across the surface of the slab, which can only be found in natural marble and wood.



### METALLIC STREAK

---

A metallic finish slab made with a special technique to give an authentic look and feel of metal.





The Ultima

TECHNICAL FEATURES



Stain  
Resistant



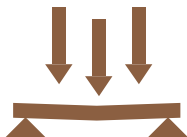
Scratch  
Resistant



High Abrasion  
Resistance



Water  
Resistant



High Flexural  
Strength



Easy  
Installation



Fire  
Resistant



Thermal  
Resistant



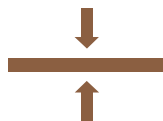
Chemical  
Resistant



Zero  
Maintenance



Easy To  
Clean



9mm  
Thickness









## GLORIOUS HUES OF OPULENCE

Cosmopolitan in nature these tiles come in a plethora of textures and finishes fit for every corner of your house. Adding a hint of natural beauty to your home these tiles will make you look twice. Available in various hues the Ultima 1200x1800 mm give you various decorative possibilities for both indoor and outdoor spaces.

### The Ultima

1200x1800 mm



For wall  
application



For Floor  
application



Fine  
detailing



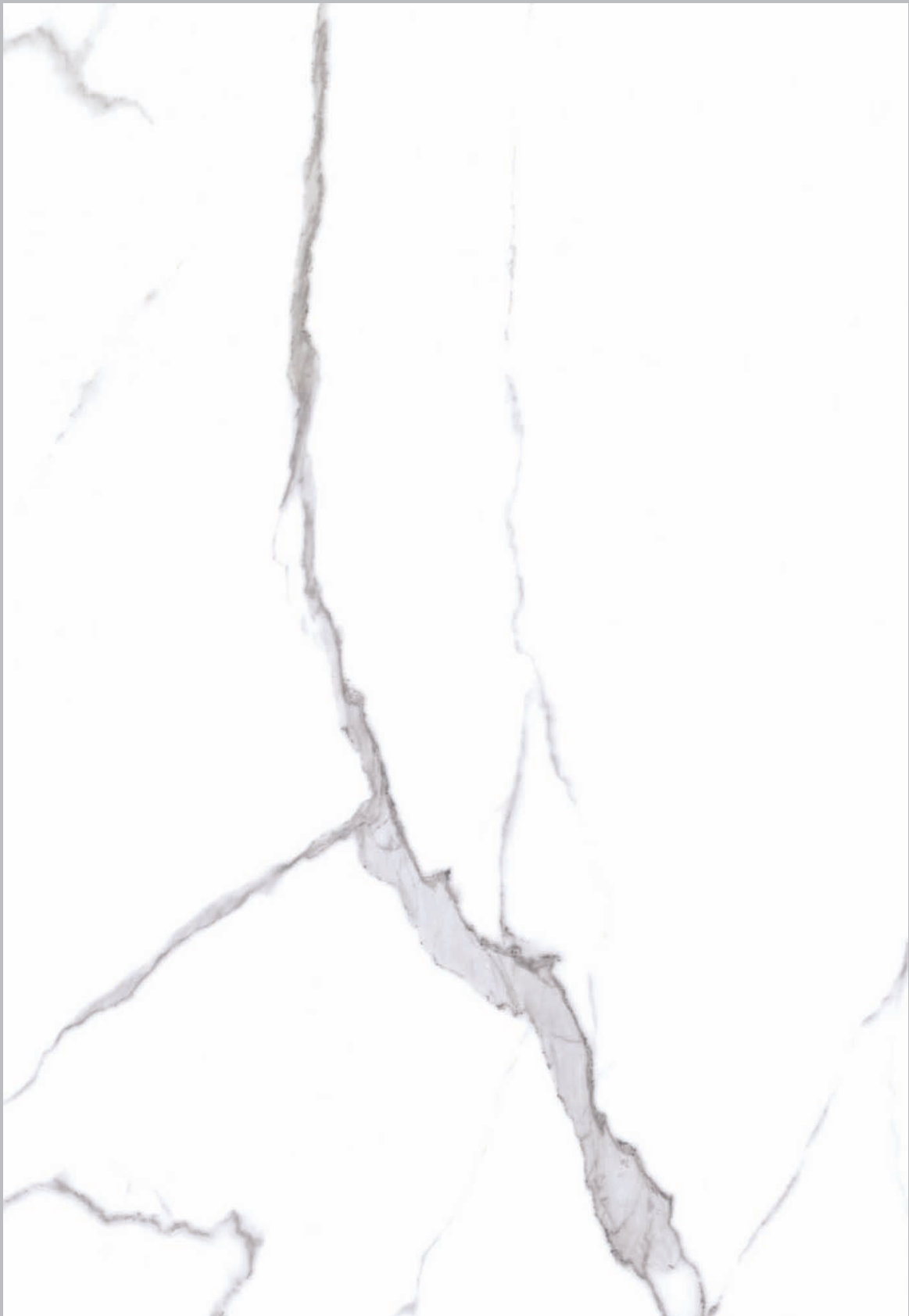
Stain  
resistant



Water  
resistant



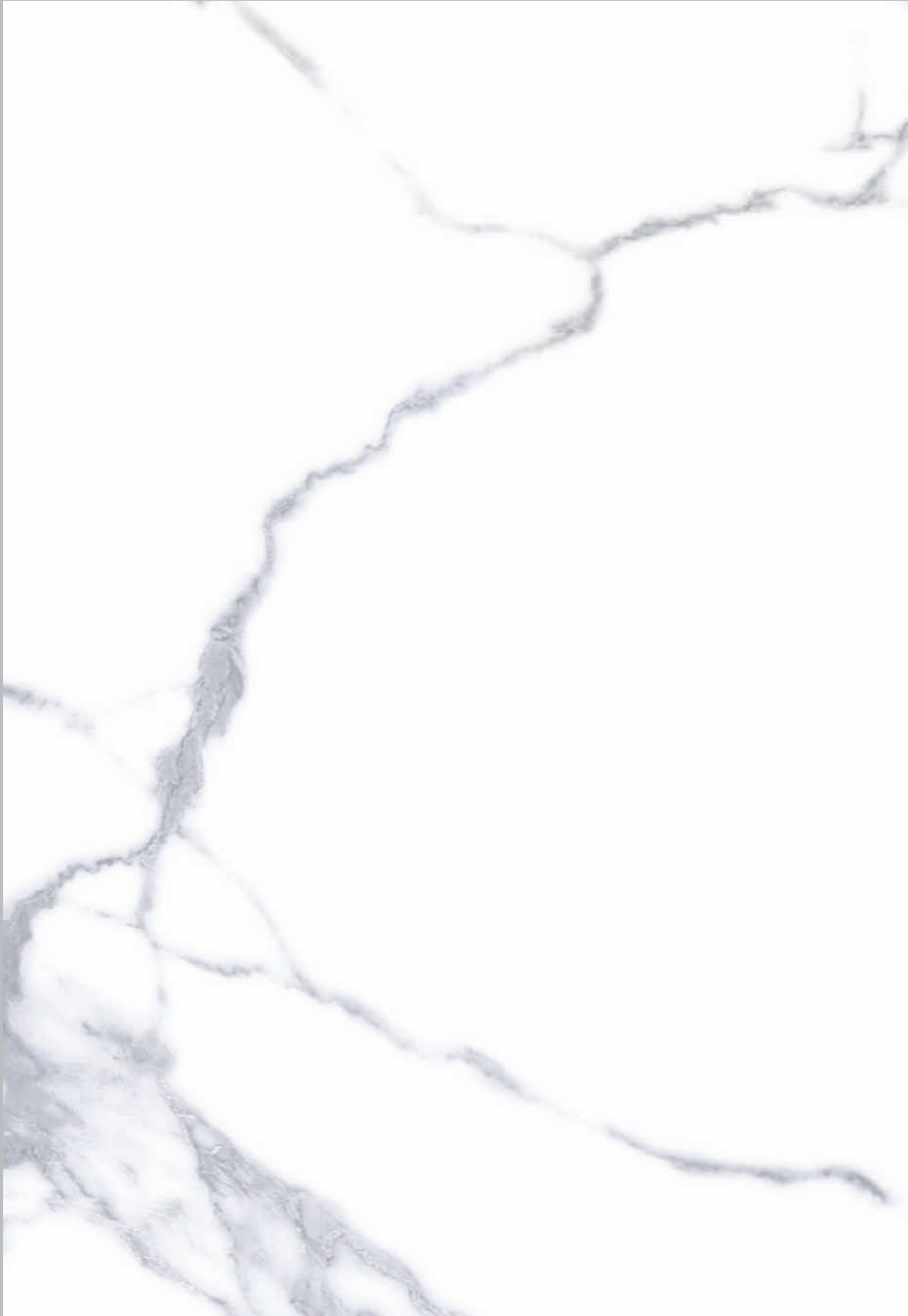
**THE ULTIMA**  
1200x1800 mm



ARBESCATO (Polished | Marbletech)

SUPERWHITE



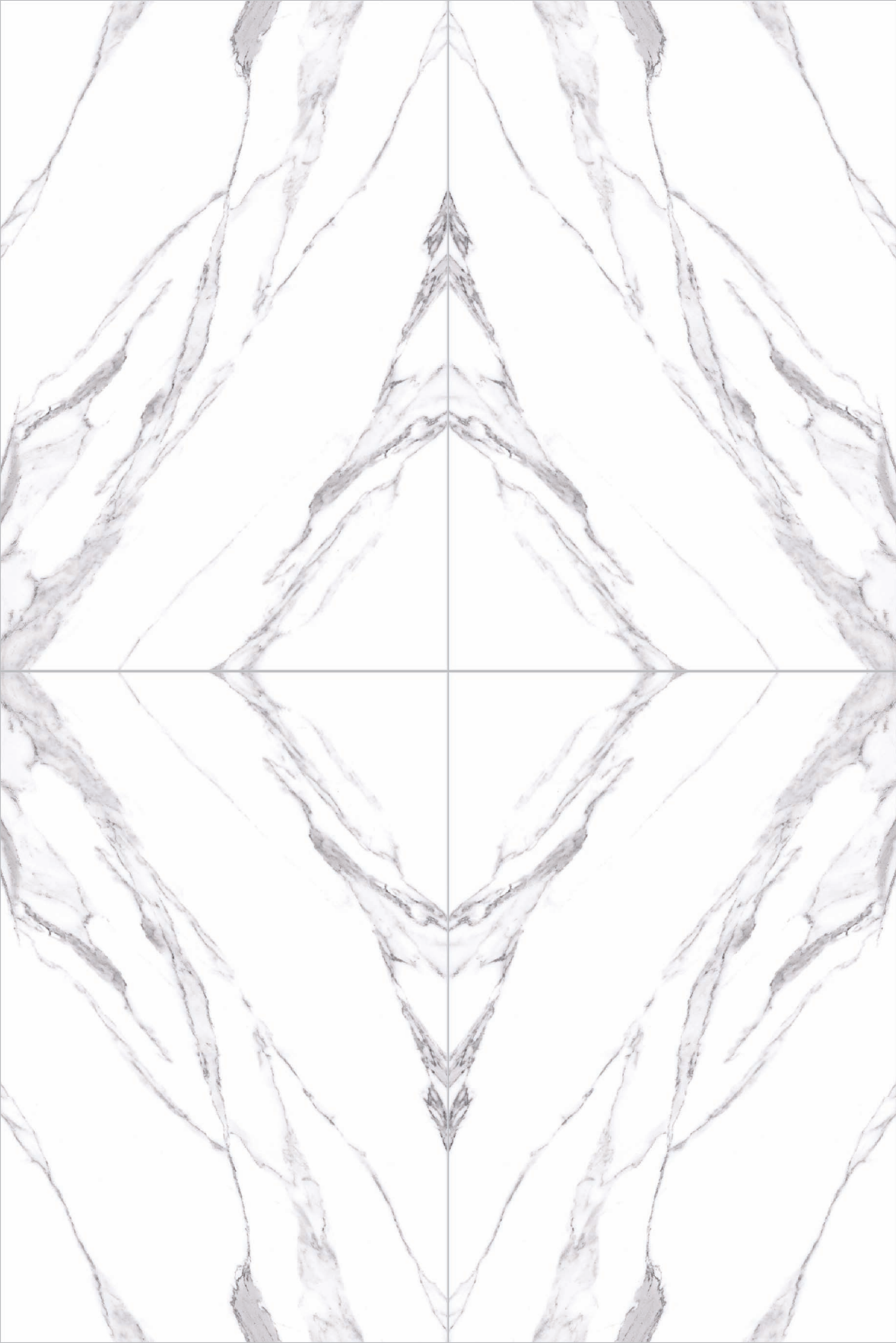


POLARIS (Polished)

SUPERWHITE



**THE ULTIMA**  
1200x1800 mm



SATUARIO (Polished)

SUPERWHITE

BOOKMATCH









# THE ULTIMA

1200x1800 mm



SATUARIO CLASSICO

POLISHED

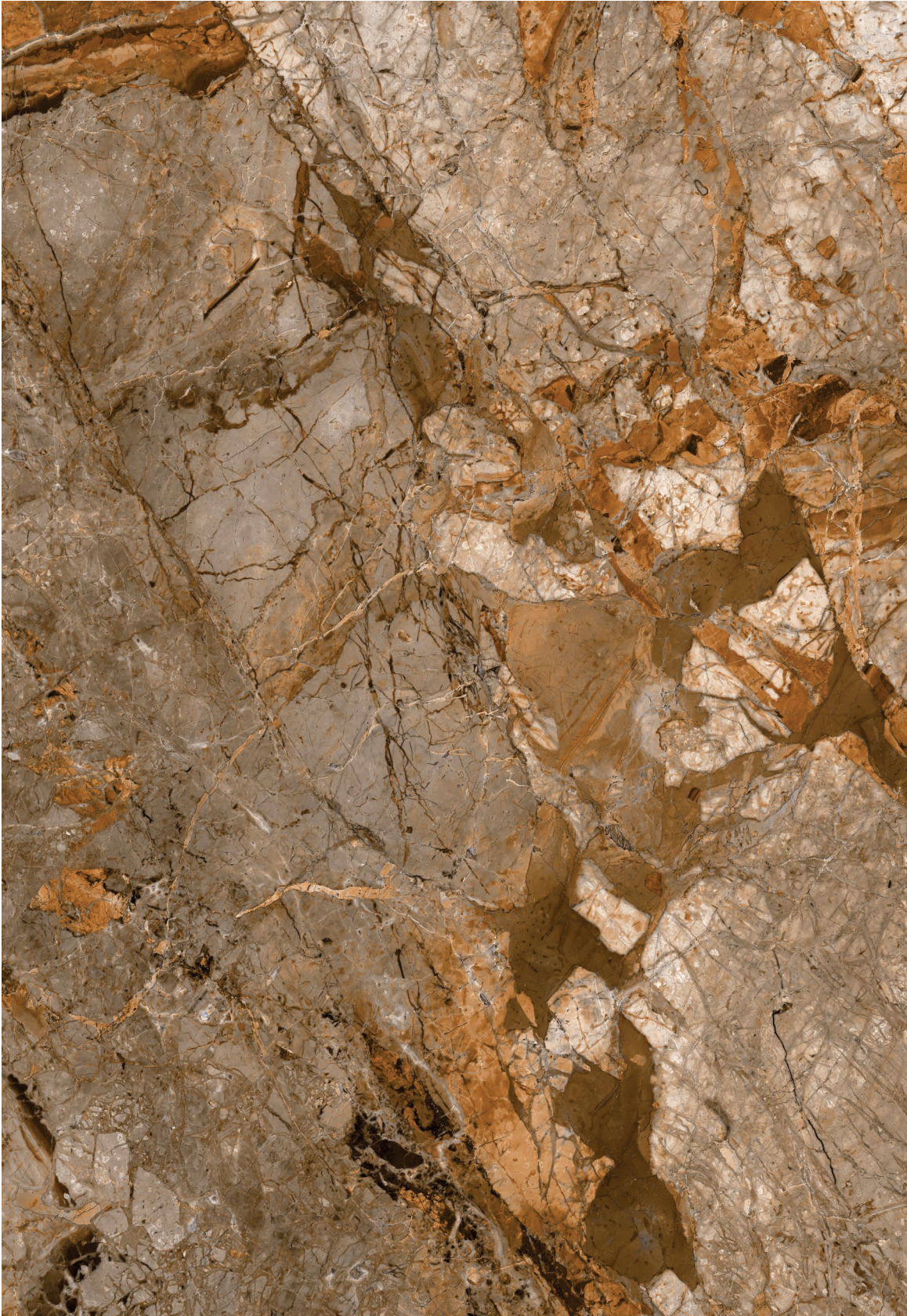








**THE ULTIMA**  
1200x1800 mm



BRECCIA BROWN

PREMIUM POLISHED









**THE ULTIMA**  
1200x1800 mm



PULPIS BRONZE

PREMIUM POLISHED



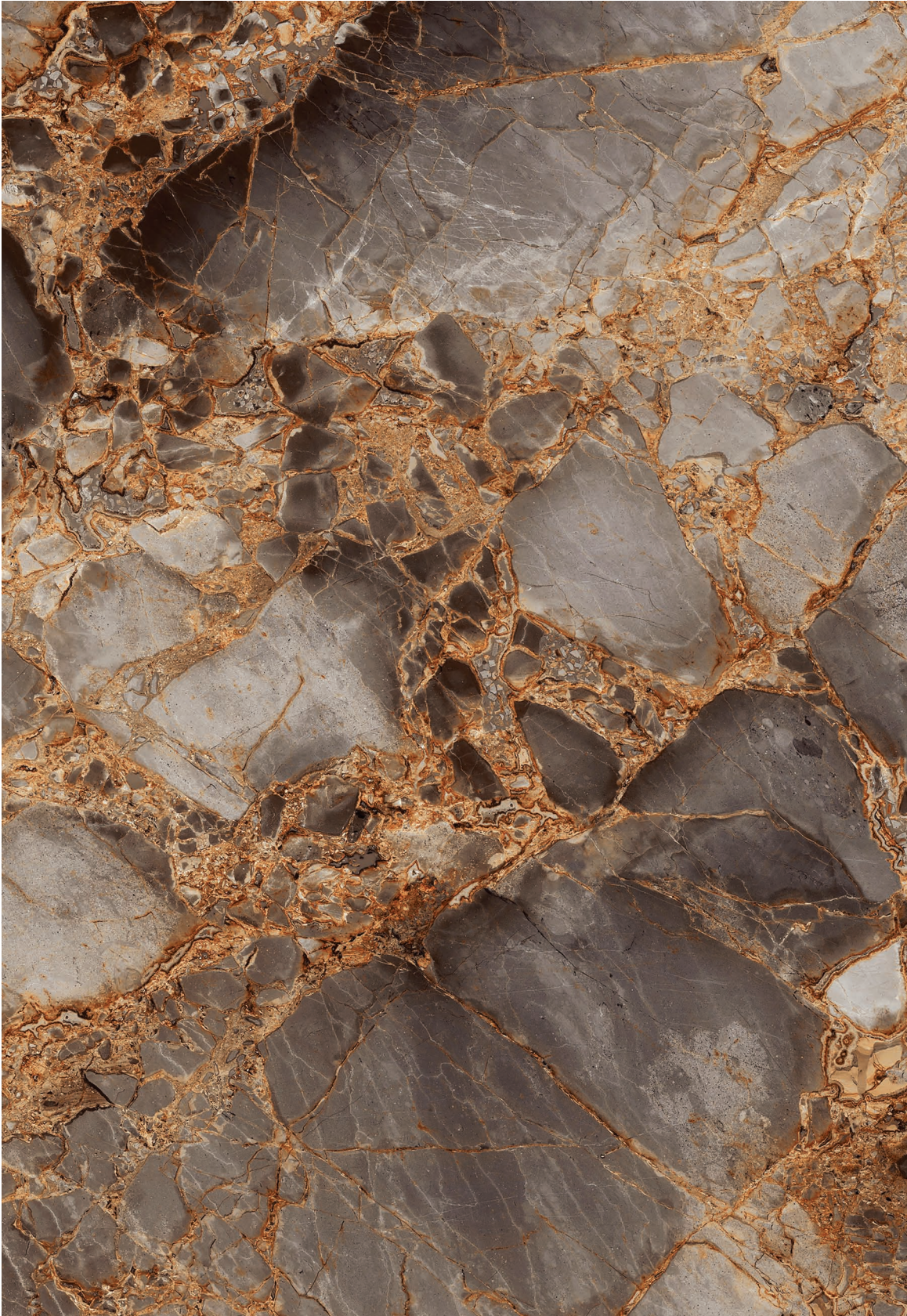


ARMANI BROWN

PREMIUM POLISHED



**THE ULTIMA**  
1200x1800 mm



VERSACE COPPER

PREMIUM POLISHED









# THE ULTIMA

1200x1800 mm



BLACK TRAVERTINO

PREMIUM POLISHED



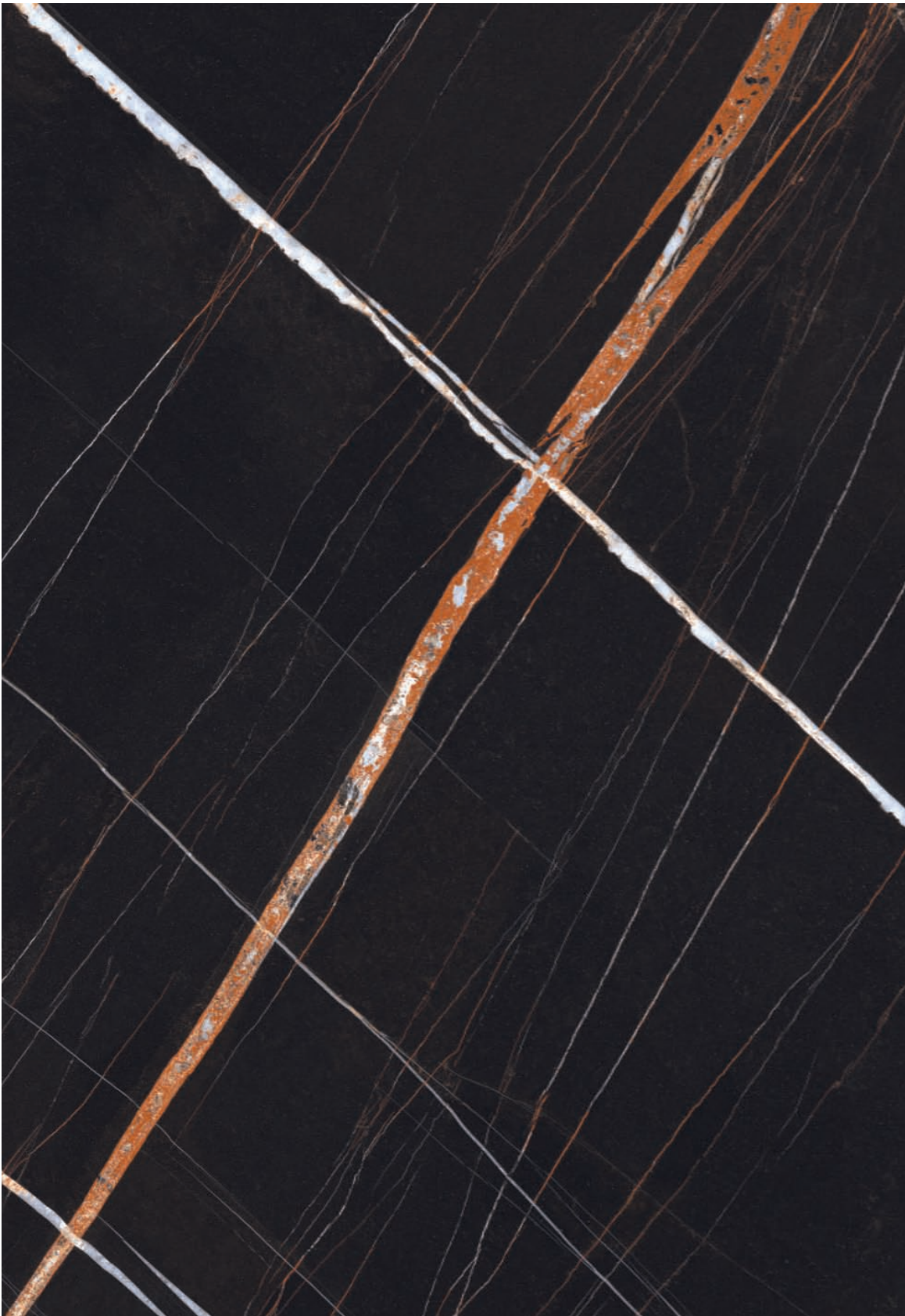


WILLIAMS GREY

PREMIUM POLISHED



**THE ULTIMA**  
1200x1800 mm



NERO ST LAURENT (BOOKMATCH)

PREMIUM POLISHED









**THE ULTIMA**  
1200x1800 mm



BRECCIA AURORA

POLISHED









**THE ULTIMA**  
1200x1800 mm



PERLATO

POLISHED





ROYAL DYNA

POLISHED



**THE ULTIMA**  
1200x1800 mm



CLASSIC BEIGE

POLISHED





TILES  
VIEW





**THE ULTIMA**  
1200x1800 mm



ZION BEIGE

POLISHED





BOTTICINO

POLISHED



**THE ULTIMA**  
1200x1800 mm



OLIKHA BEIGE

POLISHED









# THE ULTIMA

1200x1800 mm



JERICO MARFIL

POLISHED





JERICO OCRE

POLISHED



**THE ULTIMA**  
1200x1800 mm



TRAVERTINO BEIGE

POLISHED









**THE ULTIMA**  
1200x1800 mm



ONYX BLANCO

POLISHED





KASHMIR MARFIL

POLISHED



**THE ULTIMA**  
1200x1800 mm



CREMA MARBLE

POLISHED









**THE ULTIMA**  
1200x1800 mm



ZION MARFIL

POLISHED





BURBERRY MARFIL

POLISHED



**THE ULTIMA**  
1200x1800 mm



ARMANI GREY

POLISHED









**THE ULTIMA**  
1200x1800 mm



OCEANIC GREY

POLISHED





CLASSIC GREY

POLISHED



**THE ULTIMA**  
1200x1800 mm



EMPREDOR GRIS

POLISHED

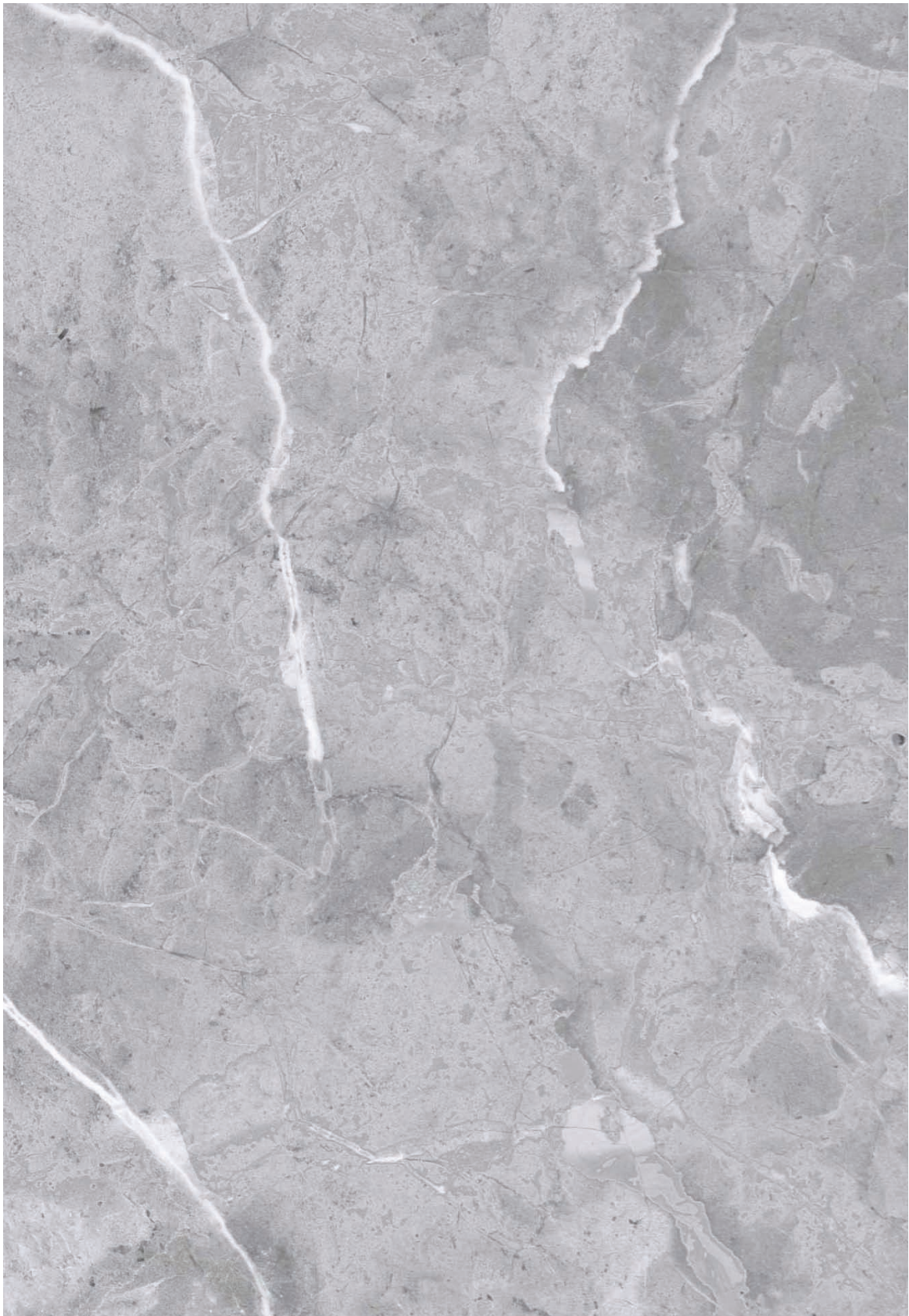








**THE ULTIMA**  
1200x1800 mm



ATLANTA GREY

MARBLETECH





BOTTICINO CLASSICO

MARBLETECH



**THE ULTIMA**  
1200x1800 mm



EMPREDOR LIGHT



MARBLETECH







**THE ULTIMA**  
1200x1800 mm



EMALI BEIGE

MARBLETECH





**GALALA BEIGE**

**MARBLETECH**



**THE ULTIMA**  
1200x1800 mm



PULPIS MARFIL

MARBLETECH









**THE ULTIMA**  
1200x1800 mm



OSLO GRIS



PREMIUM MATT







**THE ULTIMA**  
1200x1800 mm



OSLO MARFIL MATT





OSLO OCRE

MATT



**THE ULTIMA**  
1200x1800 mm



LOFT GREY

PREMIUM GLOSS MATT









**THE ULTIMA**  
1200x1800 mm



DAFFODILS



DECOR













TECHNOLOGY  
MEETS STYLE

This contemporary tile is a unique modern addition to add versatility to your spaces. With an array of modern and opulent designs and finishes to choose from the Ultima 1200x1200 mm brings the outdoors to your indoors. With unique Polished, Marbletech, Matt and Carving finish these tiles add a hint of natural beauty to your living space.

The Ultima

1200x1200 mm



For wall  
application



For Floor  
application



Fine  
detailing



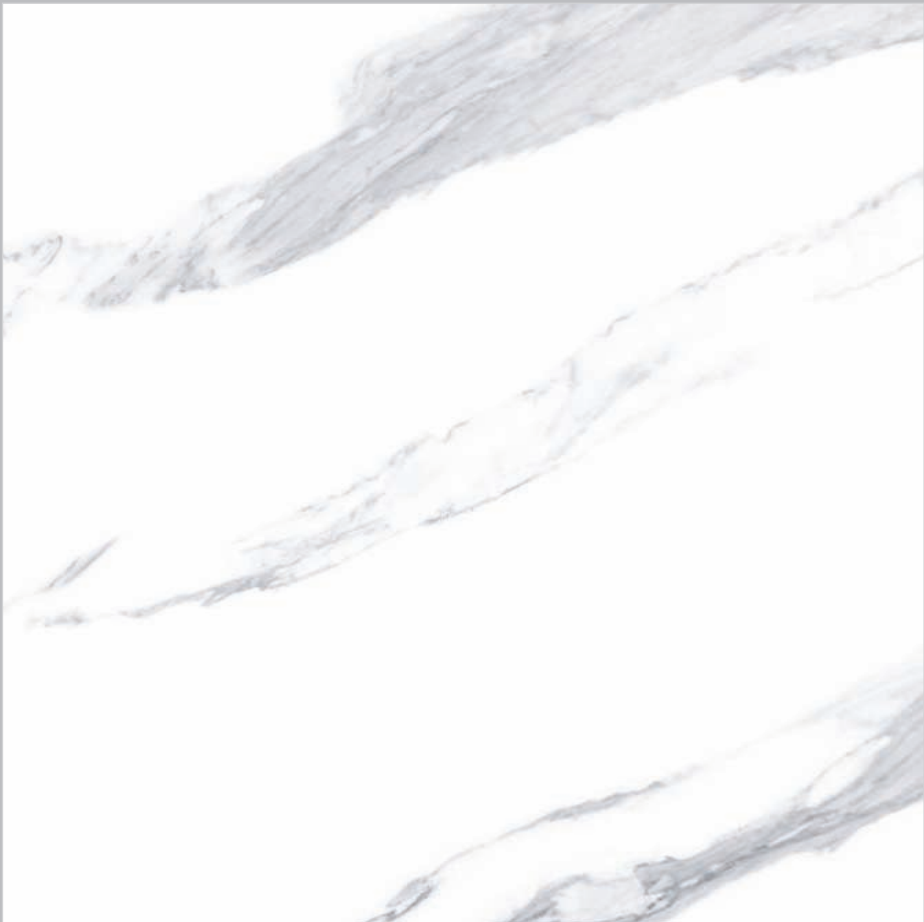
Stain  
resistant



Water  
resistant



**THE ULTIMA**  
1200x1200 mm



SATUARIO (POLISHED)

SUPERWHITE



IMPERIAL BLANCO (POLISHED)

SUPERWHITE

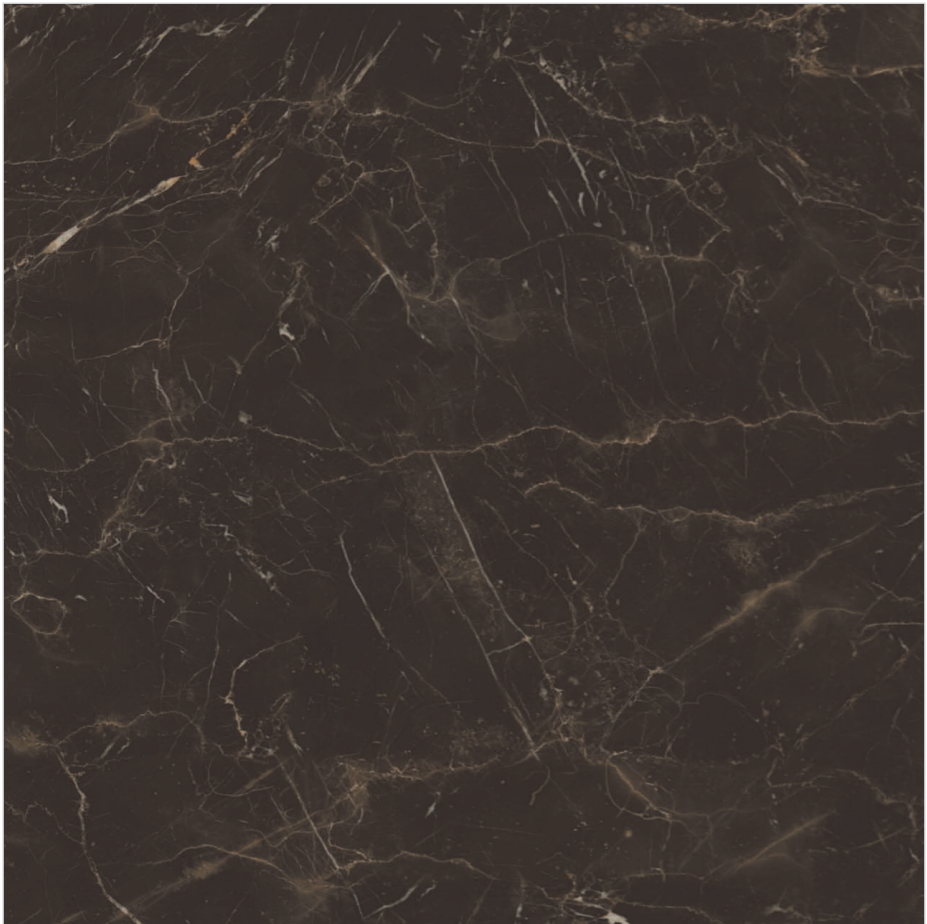








**THE ULTIMA**  
1200x1200 mm



IRIS BROWN

PREMIUM POLISHED



MILANO BROWN

PREMIUM POLISHED







**THE ULTIMA**  
1200x1200 mm



**BOTTICINO CLASSICO** **POLISHED**



**CORSICA BEIGE** **POLISHED**





PATRONIA MARFIL

POLISHED



PATRONIA MARFIL | POLISHED



**THE ULTIMA**  
1200x1200 mm



JERICO MARFIL POLISHED



DYNA PEARL POLISHED









**THE ULTIMA**  
1200x1200 mm



MONTREAL MARFIL

POLISHED



MILANO BEIGE

POLISHED





PERLATO BEIGE

POLISHED



PERLATO BEIGE | POLISHED



**THE ULTIMA**  
1200x1200 mm



**GALALA BEIGE**

**POLISHED**



**TRAVERTINO MARFIL**

**POLISHED**









**THE ULTIMA**  
1200x1200 mm



BOTTICINO

MARBLETECH



CREMANO IVORY

MARBLETECH





KASHMIR MARFIL

MARBLETECH



CREMANO IVORY | MARBLETECH



**THE ULTIMA**  
1200x1200 mm



ROYAL DYNA

MARBLETECH



WILLIAMS GREY

MARBLETECH









**THE ULTIMA**  
1200x1200 mm



ARKETY BRONZE PREMIUM MATT



SAHARA BRONZE PREMIUM MATT







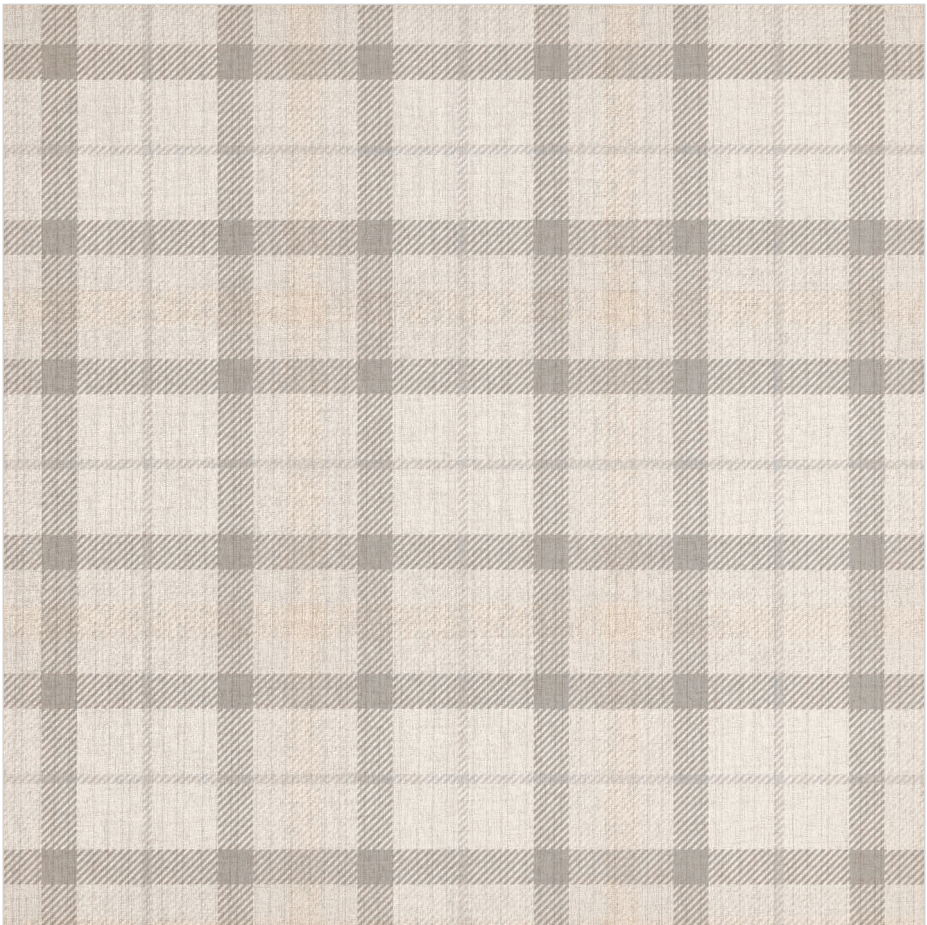


**THE ULTIMA**  
1200x1200 mm



SAHARA GREY

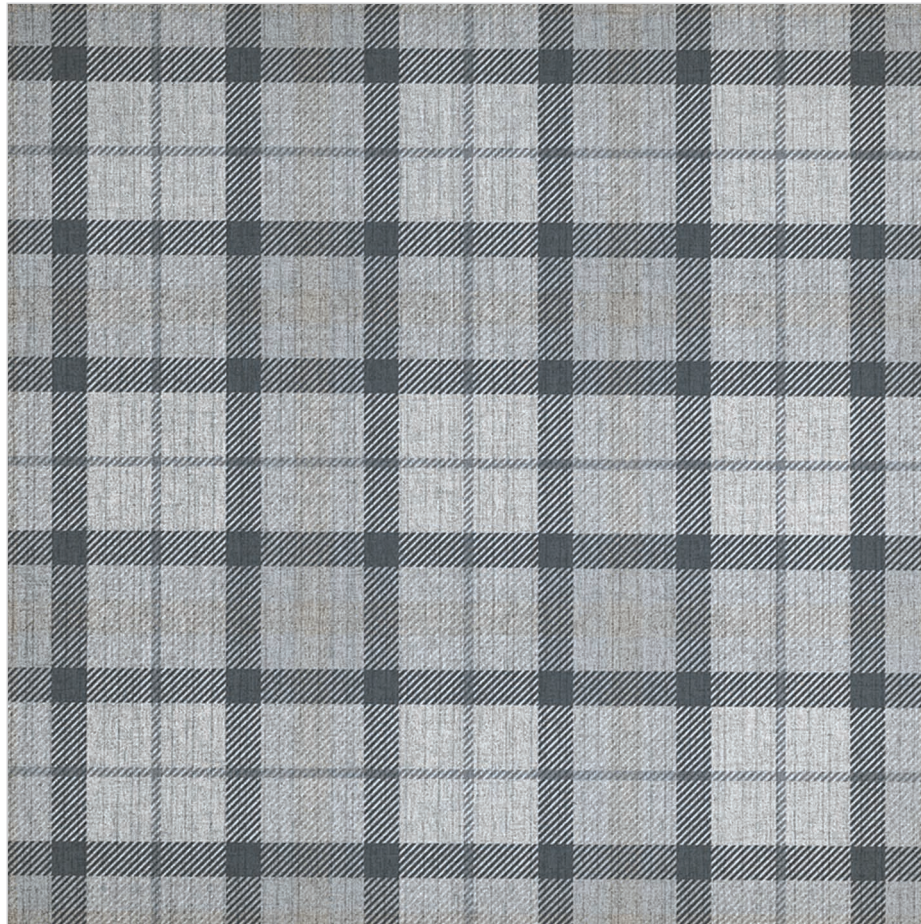
MATT



FABRICO BEIGE

MATT





FABRICO GREY

MATT



FABRICO GREY | MATT



**THE ULTIMA**  
1200x1200 mm



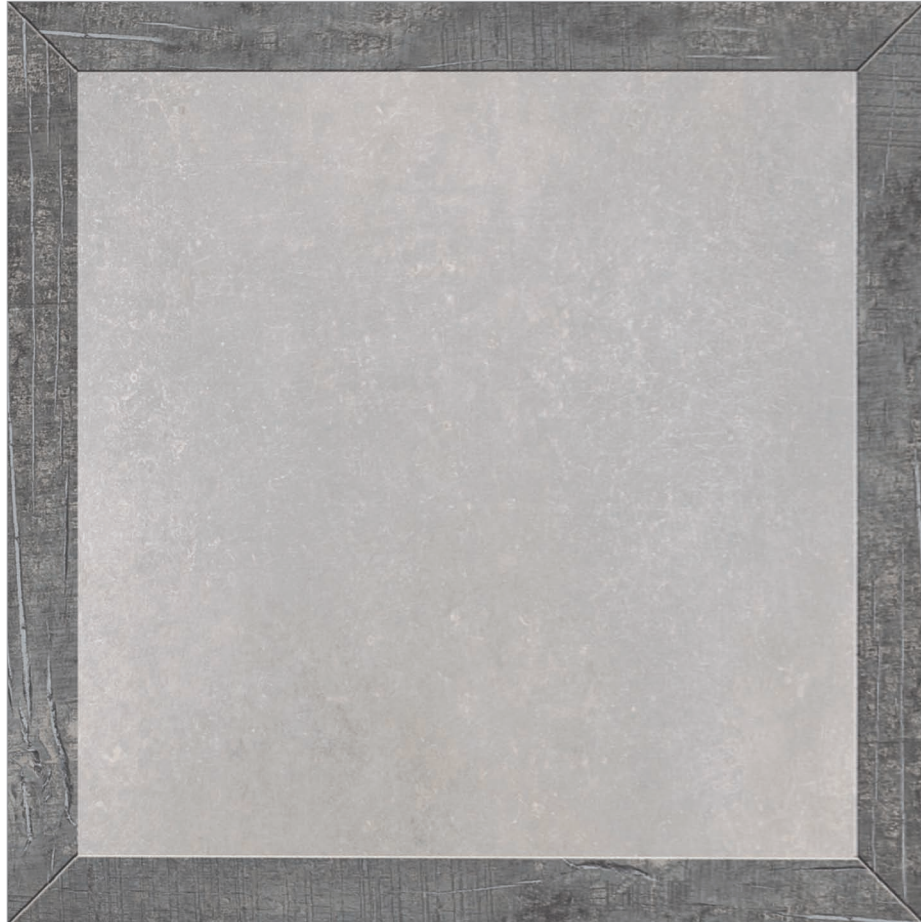
ART WOOD

GLOSS MATT



ARTWOOD | GLOSS MATT





FUSION GREY

METALLIC STREAK



BOTTICINO SATIN

CARVING









## VERSATILITY AT ITS BEST

Seamless and versatile these tiles are sophisticated and an epitome of panache and beauty. Adding these tiles to your indoor and outdoor spaces ensure class and style. Available in exquisite finishes like Polished, Marbletech and Matt these tiles add a unique finish to your home.

### The Ultima

800x1600 mm



For wall  
application



For Floor  
application



Fine  
detailing



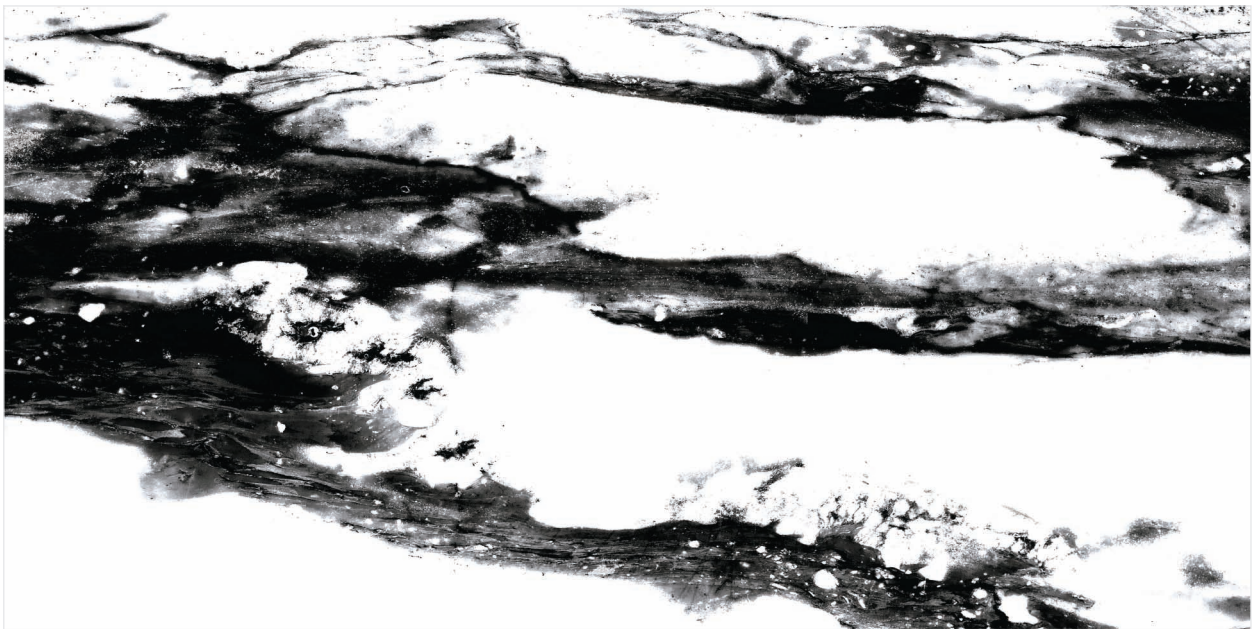
Stain  
resistant



Water  
resistant

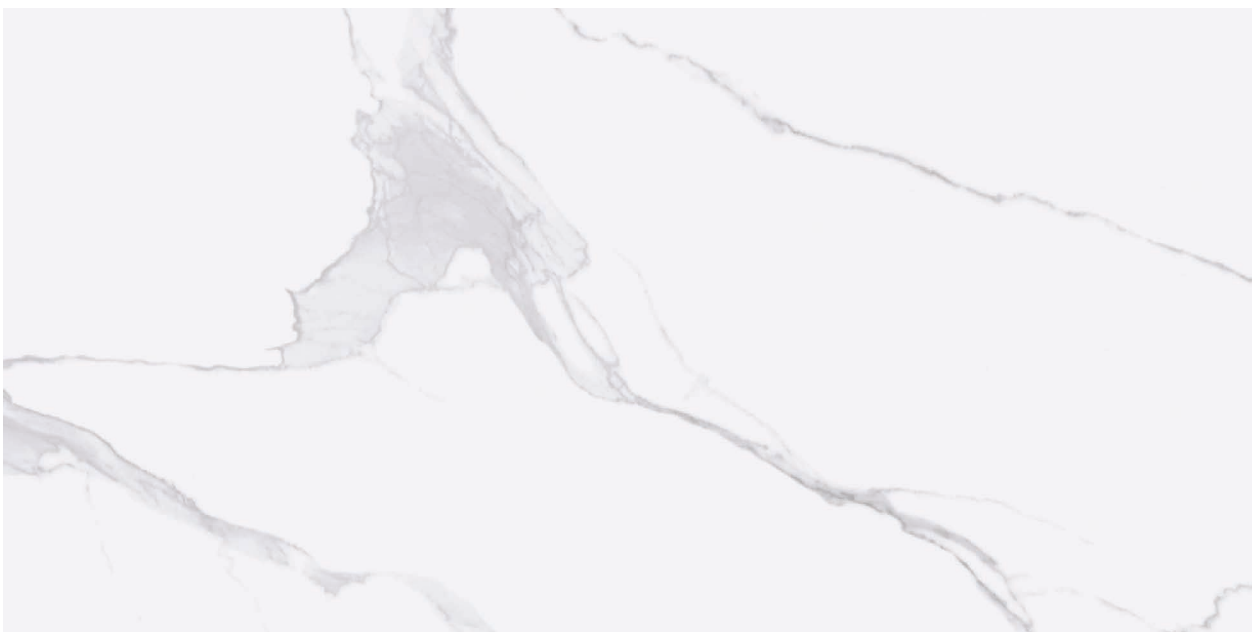


**THE ULTIMA**  
800x1600 mm



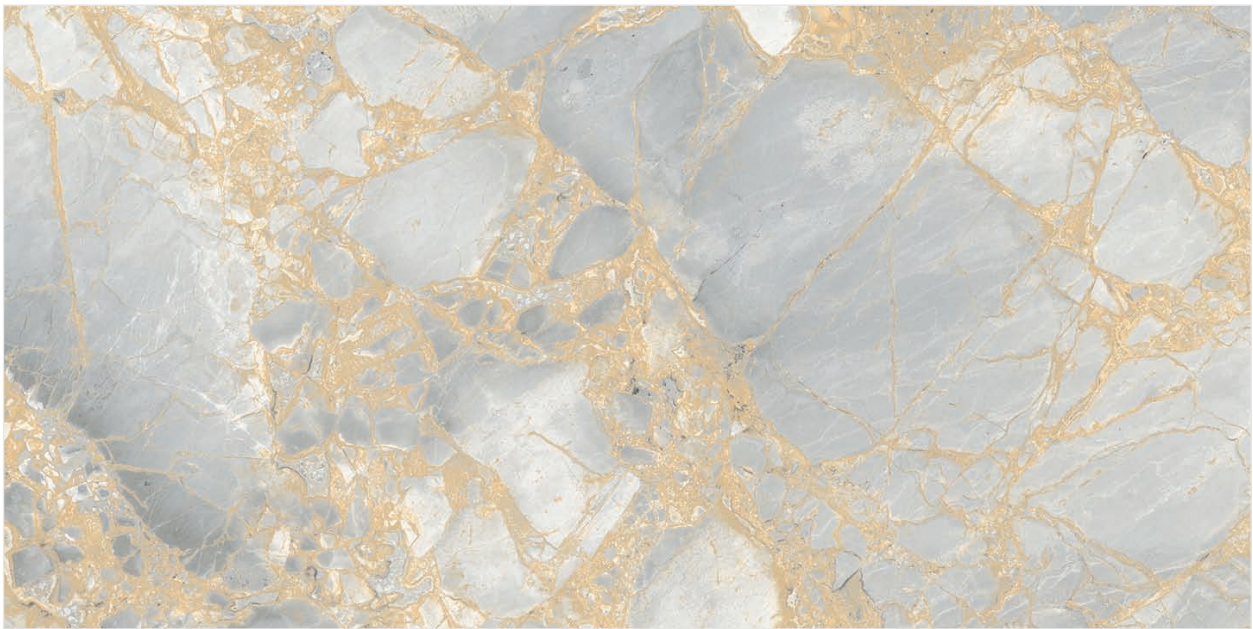
CALCUTTA RENOIR

PREMIUM POLISHED



VERSACE WHITE

PREMIUM POLISHED



VERSACE GOLD

PREMIUM POLISHED



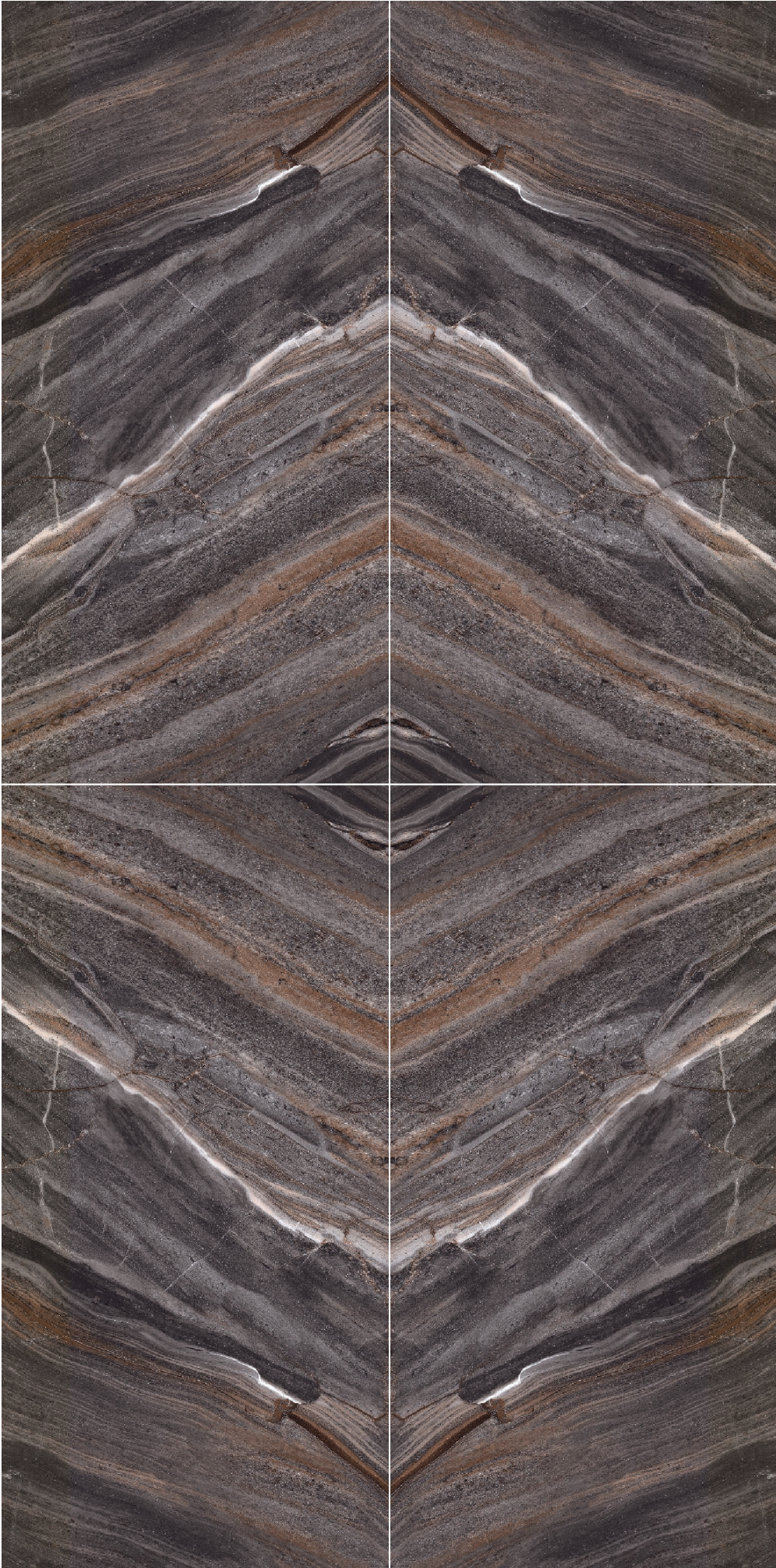




**THE ULTIMA**  
800x1600 mm

BLOCK A

BLOCK B



ENIGMA GOLD

PREMIUM POLISHED

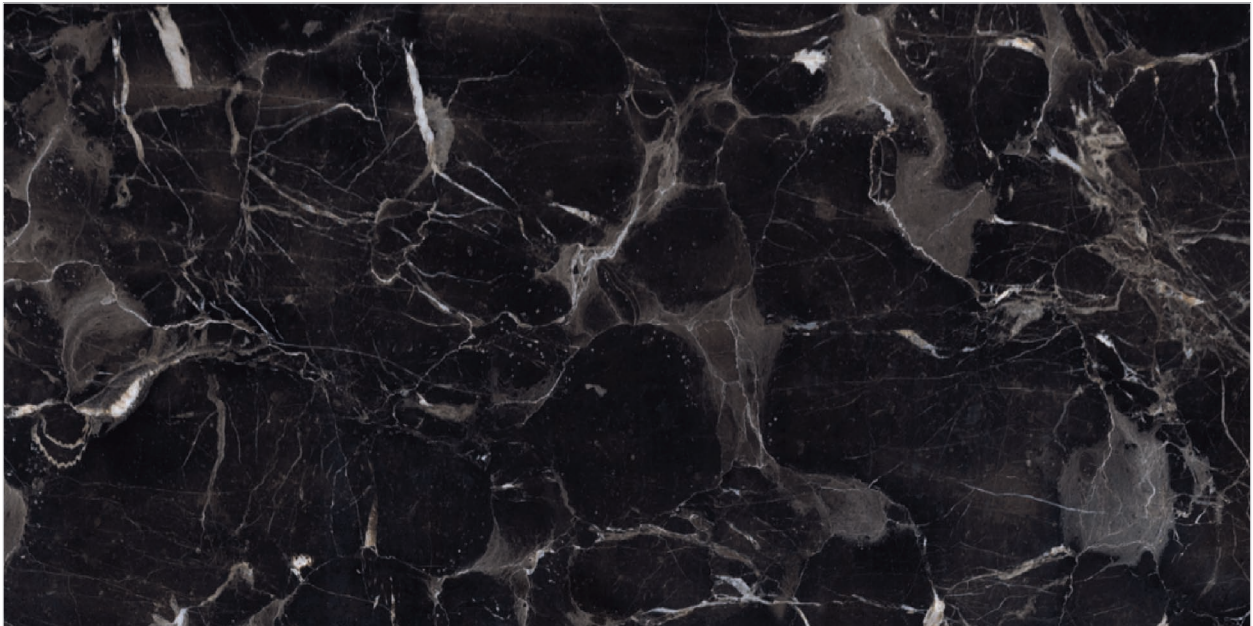
BOOKMATCH







**THE ULTIMA**  
800x1600 mm



MARRON EMPEROR

PREMIUM POLISHED



ONYX ROSSO

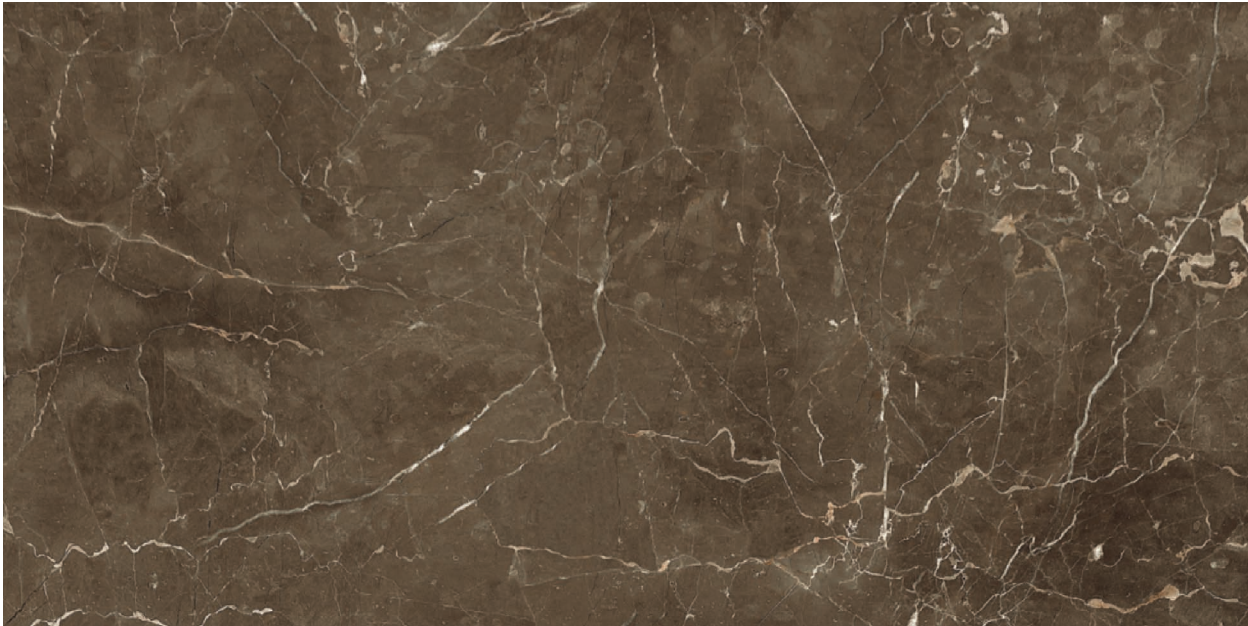
PREMIUM POLISHED



ONYX LAVA

PREMIUM POLISHED





ARMANI BROWN

PREMIUM POLISHED



LINEN BROWN

PREMIUM POLISHED



WILLIAMS GREY

PREMIUM POLISHED



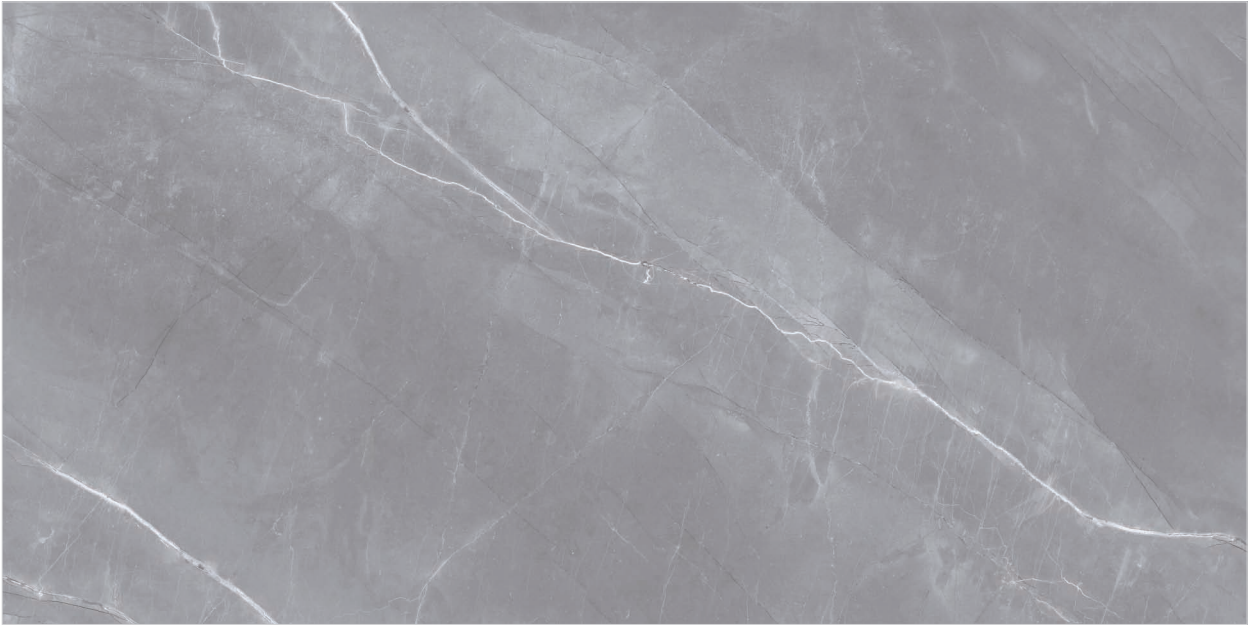
**THE ULTIMA**  
800x1600 mm



ARMANI BEIGE

POLISHED

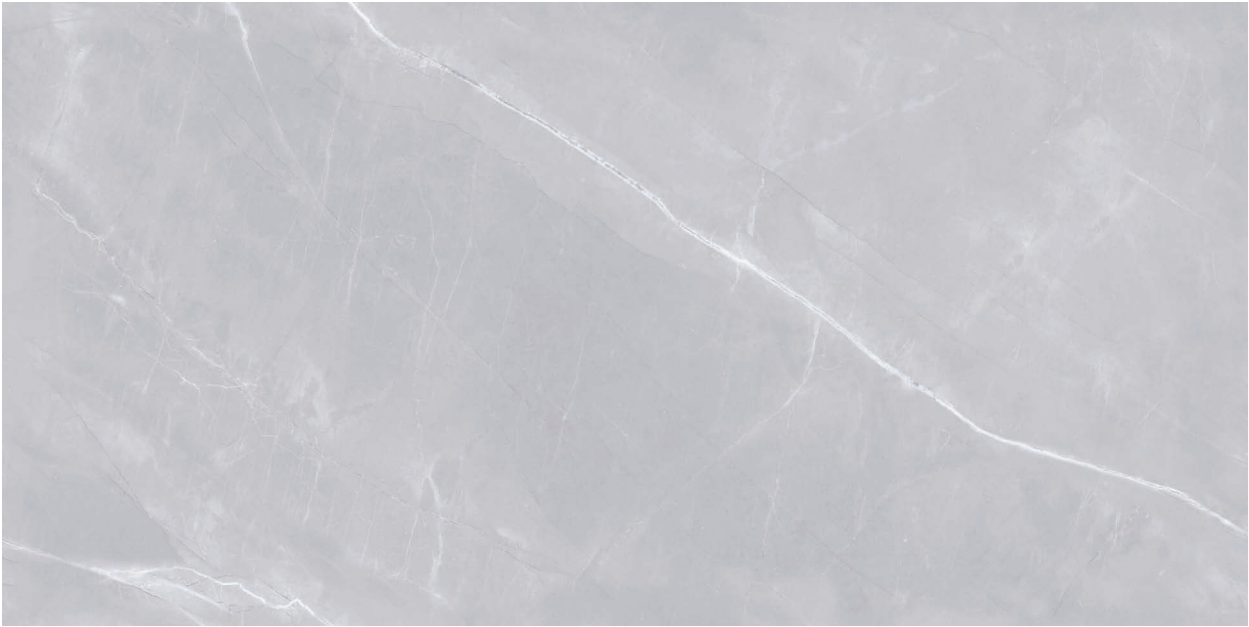
CONTINUOUS GRAPHIC



ARMANI GRIS

POLISHED

CONTINUOUS GRAPHIC



ARMANI GREY

POLISHED

CONTINUOUS GRAPHIC







**THE ULTIMA**  
800x1600 mm



ARMADIA MARFIL

POLISHED



ASTRUS MARFIL

POLISHED



BOTTICINO CLASSICO

POLISHED







**THE ULTIMA**  
800x1600 mm



**BULGARI BEIGE**

**POLISHED**



**BULGARI GREY**

**POLISHED**



**CEZAR GREY**

**POLISHED**







**THE ULTIMA**  
800x1600 mm



CARRARA

POLISHED



EMPREDOR BEIGE

POLISHED



CLAROS BEIGE

POLISHED



BLOCK A

BLOCK B



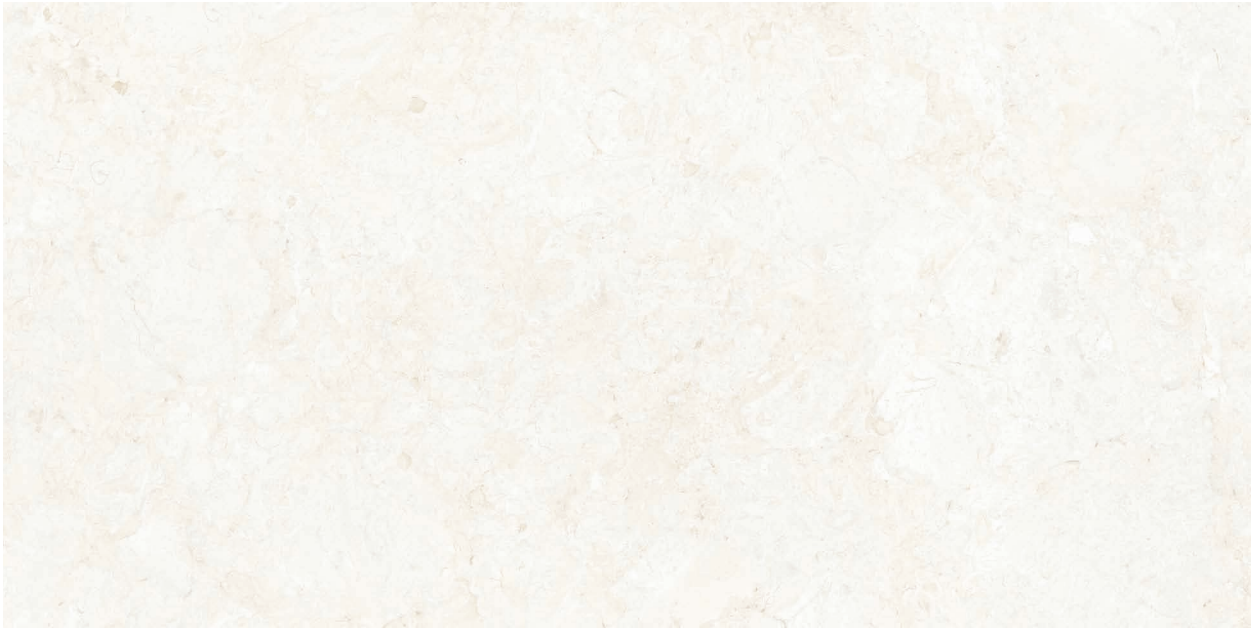
ENIGMA MARFIL

POLISHED

BOOKMATCH



**THE ULTIMA**  
800x1600 mm



NIARA BEIGE

POLISHED



MILANO BEIGE

POLISHED



KASHMIR MARFIL

POLISHED







**THE ULTIMA**  
800x1600 mm



TRAVERTINO BEIGE

POLISHED



PERLATO SICILIA

POLISHED



ZION MARFIL

POLISHED



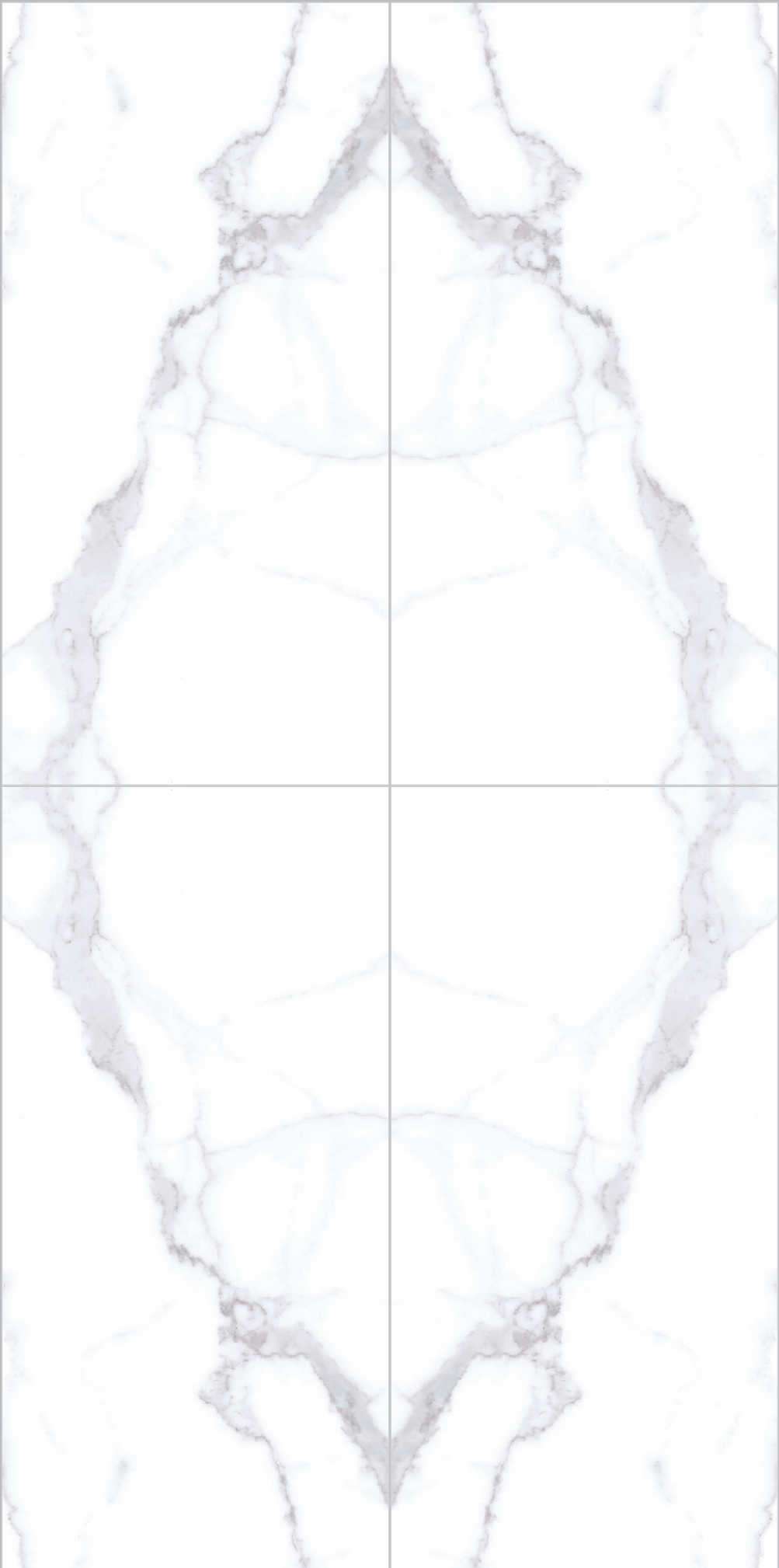




**THE ULTIMA**  
800x1600 mm

BLOCK A

BLOCK B



BOOKMATCH

SATUARIO

POLISHED





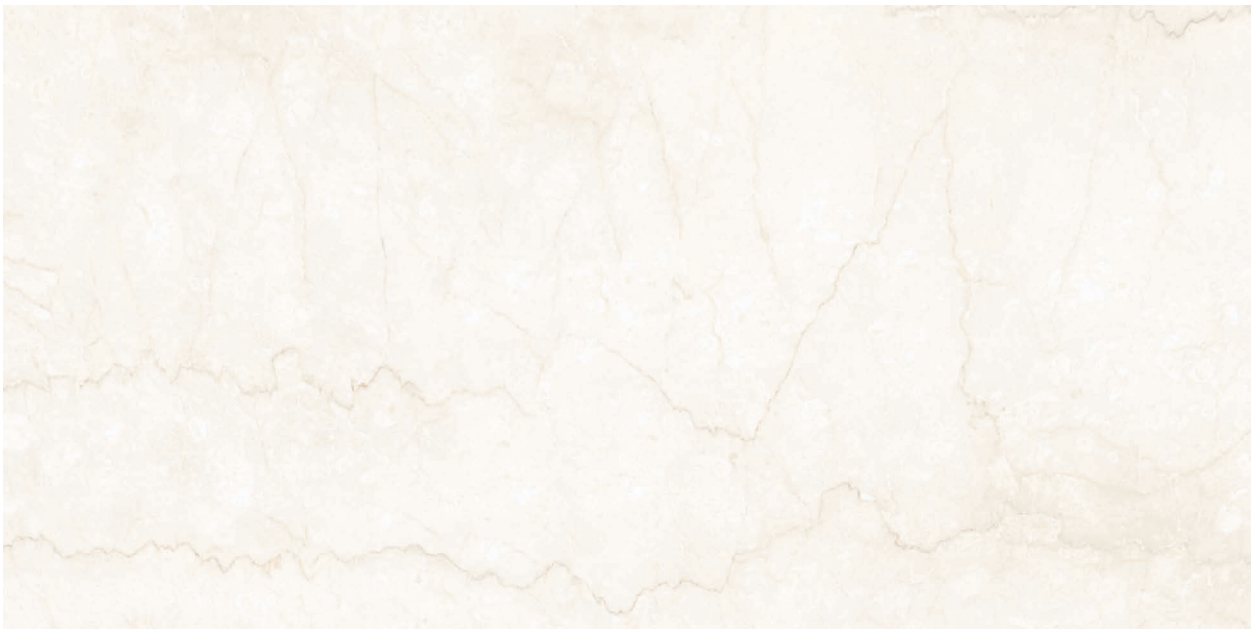


**THE ULTIMA**  
800x1600 mm



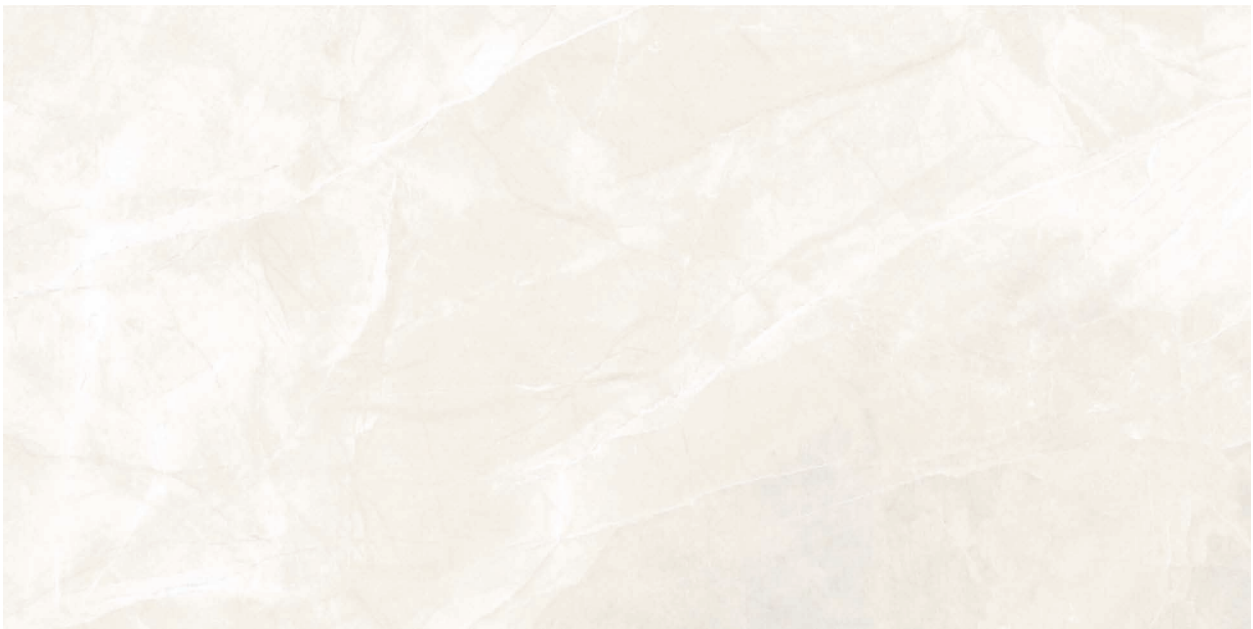
**CALCUTTA**

**MARBLETECH**



**BOTTICINO**

**MARBLETECH**



**EMALI BEIGE**

**MARBLETECH**







**THE ULTIMA**  
800x1600 mm



GRENADA

PREMIUM MATT



DAYTONA GRIS

PREMIUM MATT



DAYTONA GREY

MATT













ULTIMA MAGNIFICENTLY  
GLORIOUS TILES

These opulent planks add a charming addition to glorify every corner of your house. The Ultima 290x1800 mm are perfectly sized to add a vibrant, unique and modern touch to your spaces. This collection is available in matt finish to compliment your home.

The Ultima

290x 1800 mm



For wall  
application



For Floor  
application



Fine  
detailing



Stain  
resistant



Water  
resistant



THE ULTIMA  
290x1800 mm

ELEGANZA WENGE



MATT

ELEGANZA MAHOGANY



MATT

ELEGANZA TEAK



MATT







THE ULTIMA  
290x1800 mm









PACKING DETAILS

DIMENSIONS (MM)	NO. OF SLABS/BOX	COVERAGE AREA
1200X1800	02	4.32 m <sup>2</sup>
800X1600	02	2.56 m <sup>2</sup>
1200X1200	02	2.88 m <sup>2</sup>
290X1800	02	1.04 m <sup>2</sup>

TECHNICAL SPECIFICATIONS

S.No	Technical Characteristics	* IS 15622:2017, *EN 14411:2016 & ISO 13006:2018 Group Bla (Annex G) Standard's Requirement	Kajaria Eternity Tile's Specifications	Test method
1.	Deviation in length & width	± 0.1 % ± 0.6 %/ ± 0.3 %	± 0.10 %	IS 13630-1 EN ISO 10545-2
2.	Deviation in thickness	± 5.0 %	± 5.00 %	IS 13630-1 EN ISO 10545-2
3.	Deviation in Straightness of sides	± 0.1 % ± 0.5 %/± 0.3 %	± 0.10 %	IS 13630-1 EN ISO 10545-2
4.	Deviation in Rectangularity	± 0.1 % ± 0.5 %/± 0.3 %	± 0.10 %	IS 13630-1 EN ISO 10545-2
5.	Deviation in Surface Flatness	± 0.5 % ± 0.5 %/± 0.4 %	± 0.15 %	IS 13630-1 EN ISO 10545-2
6.	Surface quality	95% of the tiles shall be free from visible defects	95% of the tiles shall be free from visible defects	IS 13630-1 EN ISO 10545-2
7.	Modulus of rupture	Avg. 35 N/mm2, individual Min 32 N/mm2	≥ 40 N/mm <sup>2</sup>	IS 13630-6 / EN ISO 10545-4
8.	Breaking strength	Minimum 1300 N	≥ 2000 N ≥ 7000 N (Only for 60x60x1.5 cm) ≥ 1800 N (Only for 40x80 & 13x80 cm)	IS 13630-6 / EN ISO 10545-4
9.	Bulk Density	Minimum 2.20 g/cc	≥ 2.25 g/cc	IS 13630-2
10.	Glossiness	Manufacture to state the class	Min 5 for Rustic/Matt/Satin Finish Min 90 for Polish Finish	Glossimeter 60 degrees
11.	Water Absorption	≤ 0.08 %, Individual Max 0.1% ≤ 0.5 %, Individual Max. 0.6 %	≤ 0.08 %, Individual Max 0.1% ≤ 0.3 % (Only for 40x80 & 13x80 cm)	IS 13630-2 / EN ISO 10545-3
12.	Resistance to surface abrasion of Glazed tiles	Minimum Class II Report abrasion class and cycles passed	PEI-Class III to Class IV	IS 13630-11 EN ISO 10545-7
13.	Thermal expansion from ambient temperature to 100 ° C	Test method available	6x10 <sup>-6</sup> K <sup>-1</sup> Maximum	IS 13630-4 EN ISO 10545-8
14.	Thermal shock resistance	10 cycles Minimum Test method available	10 cycles Minimum	IS 13630-5 EN ISO 10545-9
15.	Moisture expansion	Maximum 0.02 Millimeter/Metre Test method available	Nil	IS 13630-3 EN ISO 10545-10
16.	Crazing resistance (Glazed Tiles)	Passes 4 cycles at 7.5 kg/cm2 Required	Passes 4 cycles at 7.5 kg/cm <sup>2</sup>	IS 13630-9 EN ISO 10545-11
17.	Frost resistance	Required	100 cycles Minimum	IS 13630-10 EN ISO 10545-12
18.	Resistance to Household Chemicals & Swimming Pool Salts #	Minimum Class AA Minimum GB	Minimum Class AA Minimum GB	IS 13630-8 EN ISO 10545-13
19.	Resistance to low & high concentration of acids & alkalis #	Manufacturer to state classification	Minimum Class AA Minimum GLB,GHB	IS 13630-8 EN ISO 10545-13
20.	Stain resistance**	Minimum Class 1 Minimum Class 3	Minimum Class 1 Minimum Class 3	IS 13630-8 EN ISO 10545-14
21.	Slipperiness	Test method available	≥ R-10 for Rustic/Matt/Satin Finish ≥ R-9 for Polish Finish	DIN 51130:2014
22.	Co-efficient of friction	Manufacture to state the class	≥ 0.32 for Rustic/Matt/Satin Finish > 0.20 for Polish Finish	ISO 10545-17
23.	Scratch hardness of surface(Moh's scale)	Minimum 5 Test method available	Min 6 for Rustic/Matt/Satin Finish Min 5 for Polish/Marbletech Finish	IS 13630-13 EN 101
24.	Impact Resistance	Minimum 0.55 Test method available	Min 0.55 & No identification of cracking	IS 13630-14 EN ISO 10545-5

# Resistance to acids & alkalis (Exception of Hydrofluoric acid & its compounds)

\*\* Vitrified tiles have resistance to most of the stains / chemicals but, it is recommended to take due care while laying and for day-to-day maintenance.

\* Applicable in Gailpur plant only.

- Colours in the catalogue are as accurate as printing process allows. Please check actual tile sample before making the final selection.
- Sizes mentioned in the catalogue are nominal sizes only.
- No claim will be entertained once the tiles are fixed.
- For better laying, please follow the instructions on the packaging box.
- In case it is required to lay the tiles on wall or floor in STAGGERED PATTERN, then always lay them in Overlap 20:80 ratio, as shown in VISUAL 1 instead of Brick pattern (overlap 50:50 ratio), as shown in VISUAL 2.
- Please make sure to check the shade/finish with the sales agent/dealer before making the final purchase because there might be variation in actual finish and that shown in the catalogue. The company will not bear any loss in such case.



VISUAL 1



VISUAL 2





## KAJARIA DISPLAY CENTRES

### NORTH

❖ **CHANDIGARH :**  
SCO-8,1<sup>st</sup> floor, Sector 7C,  
Madhya Marg,  
Chandigarh - 160019  
Phone : +91-172- 4631417  
Mobile : 9779021253, 9779021262

❖ **DEHRADUN :**  
Fortuna Tower, 1078, First Floor,  
Opp. IMA Blood Bank,  
Chakrata Road Dehradun - 248001  
Mobile : 7755001347, 9717795202  
7755001346

❖ **JAIPUR :**  
G-1, G-2, Aishwarya Tower,  
Near Hotel Hawa Mahal, Ajmer Road  
Jaipur-302005, Rajasthan  
Phone - +91-141 2223425, 9799495766

❖ **LUCKNOW :**  
7, Tajpuria palace, Faizabad Road,  
Indira Nagar, Lucknow, Uttar Pradesh  
Mobile: 9717795204, 9956252777

❖ **VARANASI :**  
Rukmani Tower, N8/247-2K-1,  
DLW, BHU Road, Newada, Sunderpur  
Varanasi-221005, Uttar Pradesh  
Mobile : 9794865554, 9005095500

### SOUTH

❖ **COIMBATORE :**  
1<sup>st</sup> Floor,No.57,Cowley Brown Road, Near Central  
Library,R.S.Puram Coimbatore - 641002.  
Mobile : 9629944454, 9677708080

❖ **HYDERABAD :**  
#3 - 143, 1st Floor, Nirvana Building,  
Kavuri Hills, Police Station Opp. Road, Madhapur  
Hyderabad - 500081, Telangana  
Mobile : 9000304996, 9000304992,  
9000005383, 7680000890, 9000304997

❖ **BANGALORE :**  
Farah Icon, 119 2nd Floor,  
Opp. New Pass Port Kendra, Lalbagh Road,  
Bangalore-560 027, Karnataka  
Mobile: 9008402949, 9008016799

❖ **CHENNAI :**  
Old No.10,New No.46,Montieth Road  
Above Wait Rose Super market  
Egmore,Chennai - 600 008.  
Mobile : 9791178678, 9952094333

❖ **COCHIN :**  
Door No. 48/557-C, MN Square  
Near Gold Souk, NH By Pass, Vyttila,  
Cochin 682019, Kerala  
Mobile: 9995868863, 9746473684, 7303663188

**Kajaria**  
DISPLAY CENTRE

### WEST

❖ **MUMBAI :**  
B WING, 617-620, Bonanza,  
Sahar Plaza Complex, 6th Floor,  
M. V Road, Near Hotel Kohinoor Continental,  
JB Nagar, Andheri East.  
Mumbai - 400059, Maharashtra  
Phone : 89685 86560, 99877 89500

❖ **PUNE :**  
2nd Floor, Grace Platina,  
Opp.Kumar Pacific Mall,  
Shankar Seth Road,  
Pune - 411042  
Mobile : 9730088497, 9730088498

## SALES REPRESENTATIVE

### NORTH

**GURGAON :**  
Mobile : 9971744115, 9717795210, 9717745205

**NOIDA :**  
Mobile : 9717795156, 9717795200, 9717795205

**DELHI & FARIDABAD:**  
Mobile : 9560553304, 9717795029, 9717795192

**KUMAON :**  
Mobile : 7755001348, 7755001349, 9717795202

**WESTERN UP :**  
Mobile : 9717795202, 8800093020, 7755001348

**HARYANA :**  
Mobile : 8295200155, 8295200410

**LUDHIANA :**  
Mobile : 9779021264, 9779021270, 9779021255, 9779021267

**HIMANCHAL PRADESH :**  
Mobile : 9779027169, 9779021253

**JAMMU & KASHMIR :**  
Mobile : 9906906622, 9086411081

### EAST

**ASSAM :**  
Mobile : 9311299711, 9903234184

**BIHAR :**  
Mobile : 9771458963, 9892408080

**JHARKHAND :**  
Mobile : 9771458963, 882918988, 8882918986

**ORISSA :**  
Mobile : 9937185338, 9937285865, 8882918923

**WEST BENGAL / KOLKATA :**  
Mobile : 9007011022, 9007011028, 9007062814

### SOUTH

**ANDHRA PRADESH :**  
Mobile : 9000300790

**VIJAYWADA**  
Mobile : 7680046467, 9000300790

### WEST

**AURANGABAD :**  
Mobile : 8600992620, 9730088497

**GOA :**  
Mobile : 9665046116, 9730088497, 7028018708

**NASIK :**  
Mobile : 8600992620, 9730088497, 7028030538

**AHMEDABAD :**  
Mobile : 9998804440, 9724340887

**NAGPUR :**  
Mobile : 9987538689, 9730088497

### CENTRAL

**CHHATTISGARH :**  
Mobile : 9981528088

**RAIPUR :**  
Mobile : 9758598467,9981528088

**BILASPUR :**  
Mobile : 7898028779,9981528088

**BHOPAL :**  
Mobile : 9981528092

**INDORE :**  
Mobile : 9630025576, 9981528089





JANUARY - 2022

Toll Free No. : 1800 309 309 | Email : [info@kajariaeternity.com](mailto:info@kajariaeternity.com) | For exports : [global@kajariaeternity.com](mailto:global@kajariaeternity.com)  
Website : [www.kajariaeternity.com](http://www.kajariaeternity.com)